



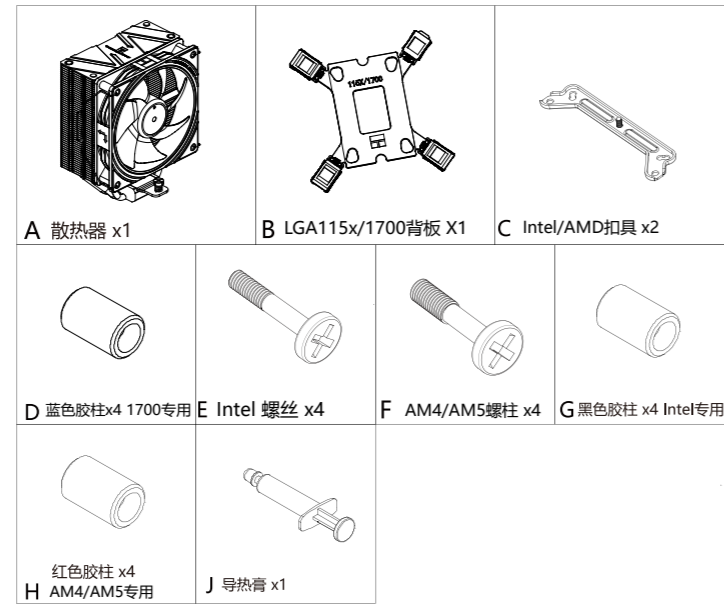
安装说明

Assassin Spirit 120 EVO 系列

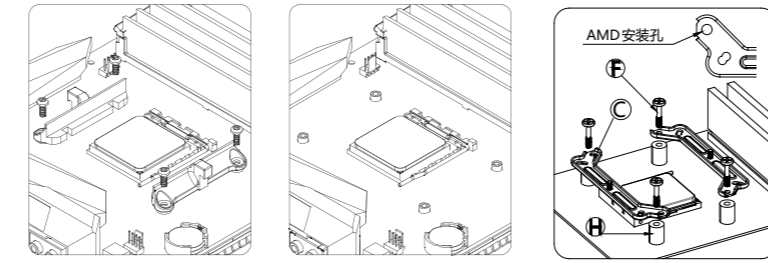
! 安装前请先去除铝底保护膜

www.thermalright.com

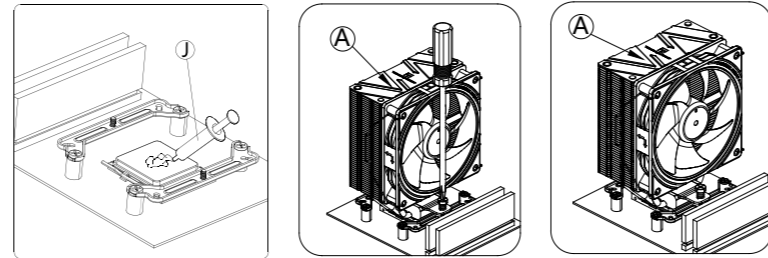
配件清单



AMD AM4/AM5

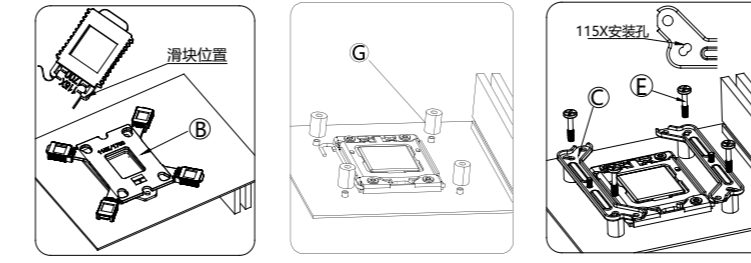


移除AMD原装塑胶支架,保留背板,使用AM4/AM5螺丝【F】将扣具【C】固定到背板

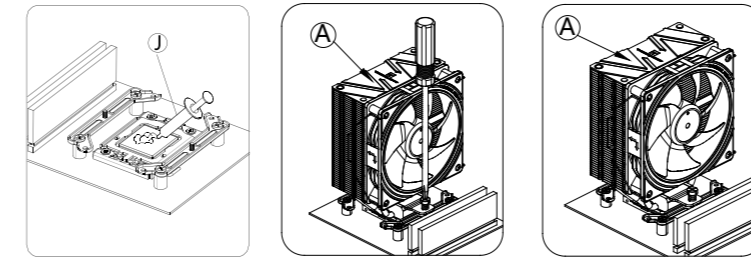


涂好导热膏,然后先锁好散热器,

INTEL LGA115X/1200

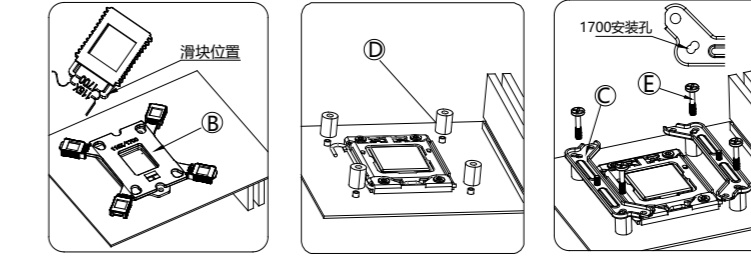


将背板【B】推到115X位置放置在主板背面,然后正面放置胶柱【G】,扣具【C】,再用螺丝【E】固定住扣具。

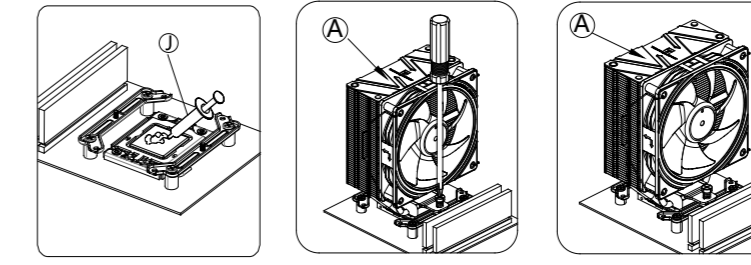


涂好导热膏,然后先锁好散热器,

INTEL LGA1700

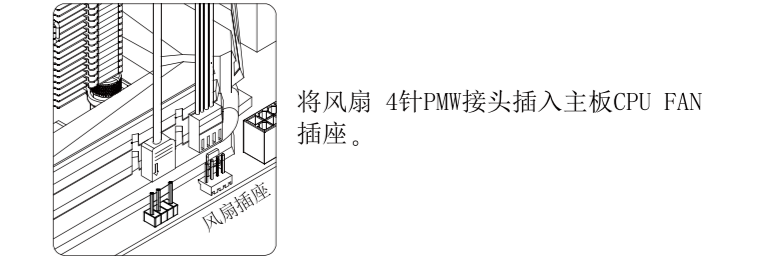


将背板【B】推到1700位置放置在主板背面,然后正面放置胶柱【D】,扣具【C】,再用螺丝【E】固定住扣具。

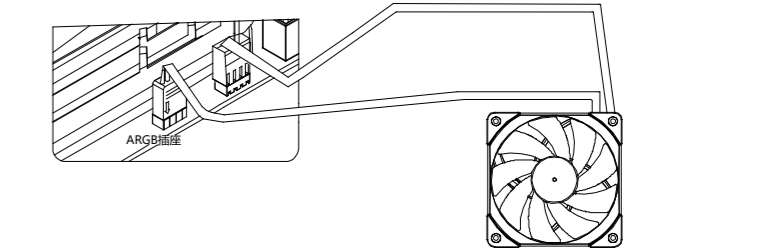


涂好导热膏,然后先锁好散热器,

风扇接线



将风扇 4针PWM接头插入主板CPU_FAN 插座。



如果风扇有ARGB灯效,请将ARGB 3针(5V)插入主板对应ARGB灯效插座或者控制器。



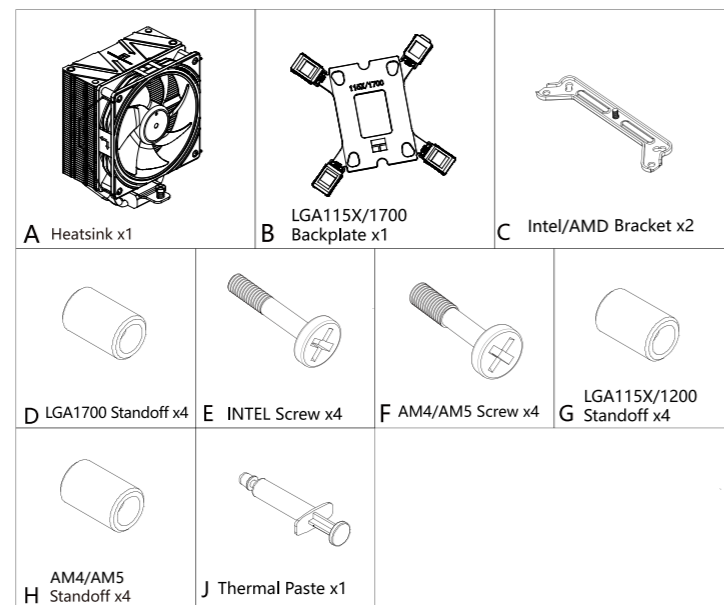
INSTALLATION GUIDE

Assassin Spirit 120 EVO Series

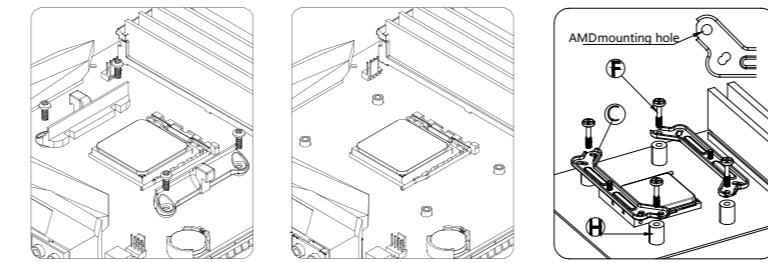
Please remove protective sticker before install

www.thermalright.com

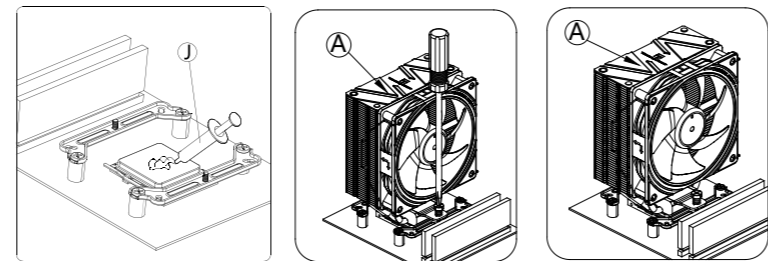
parts list



AMD AM4/AM5

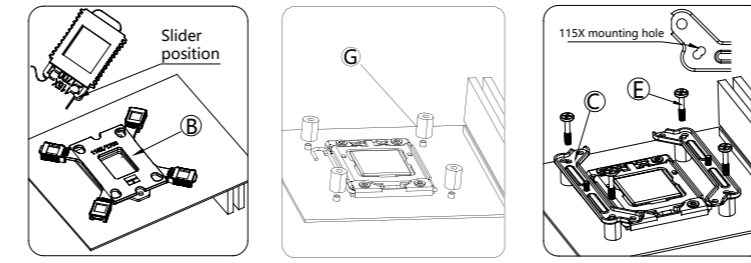


REMOVE AMD AM4 plastic brackets, KEEP the back plate, install AM4 metal brackets with AM4 screws and AM4 plastic standoffs

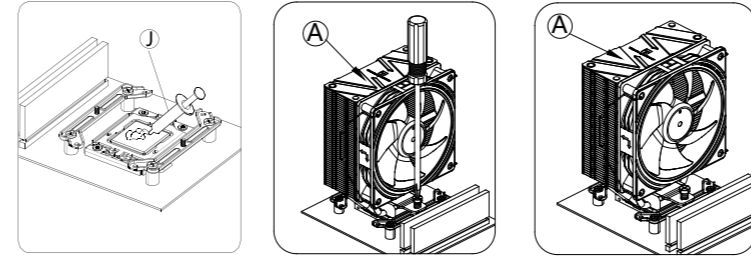


Apply thermal paste on CPU, install the heatsink with a screw driver,

INTEL LGA115X/1200

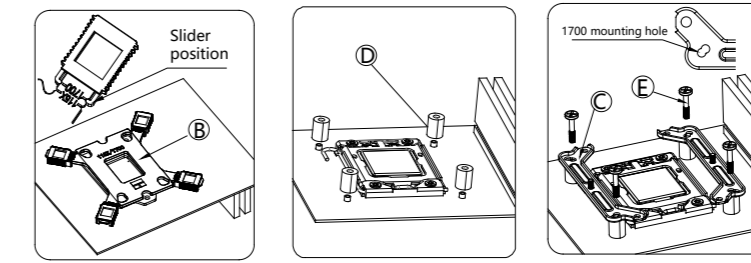


Adjust backplate mounting hole position, install backplate from back side of motherboard, place LGA115X/1200 standoffs from front side, install brackets with screws.

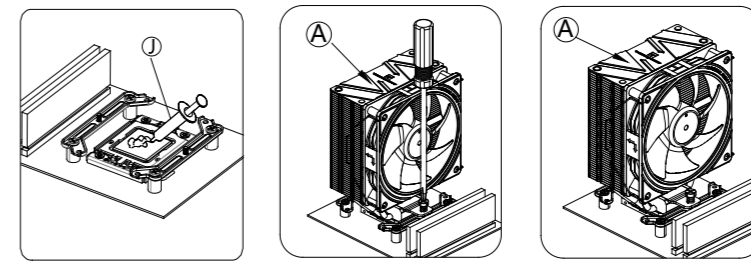


Apply thermal paste on CPU, install the heatsink with a screw driver,

INTEL LGA1700

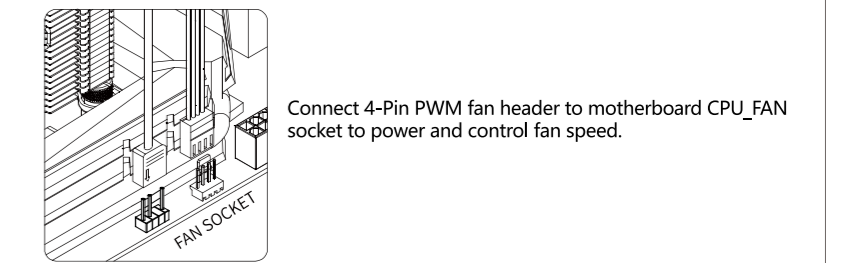


Adjust backplate mounting hole position, install backplate from back side of motherboard, place LGA1700 standoffs from front side, install brackets with screws.

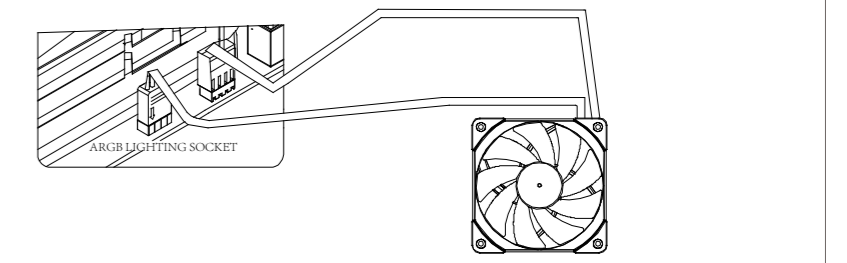


Apply thermal grease on CPU, install the heatsink with a screw driver,

Fan Wiring



Connect 4-Pin PWM fan header to motherboard CPU_FAN socket to power and control fan speed.



For Fans with Addressable-RGB lighting, connect 3-Pin ARGB lighting header to motherboard 3-Pin +5V ARGB lighting socket to control lighting effect.